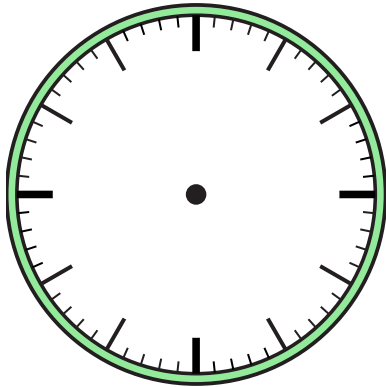




Draw the hour and minute hand on the clock so it represents the time shown.

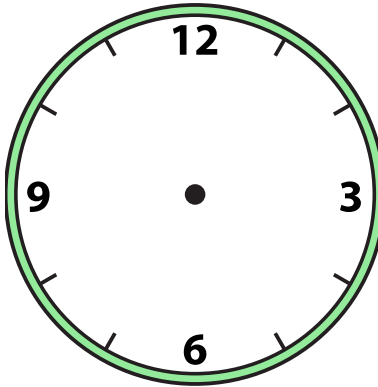
1)

2:00



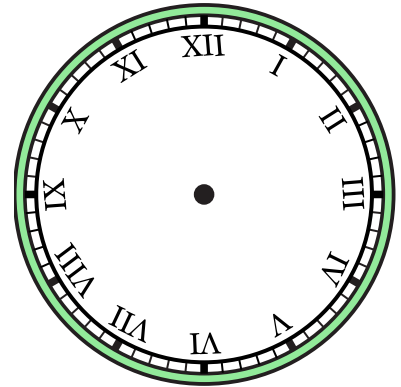
2)

2:30



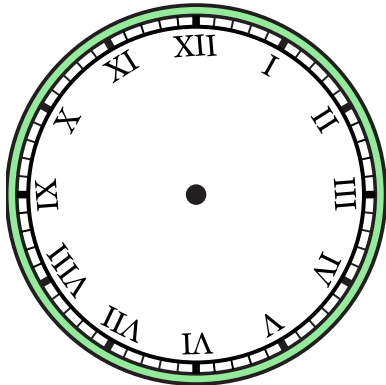
3)

12:00



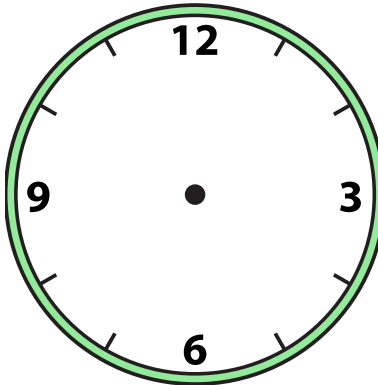
4)

6:00



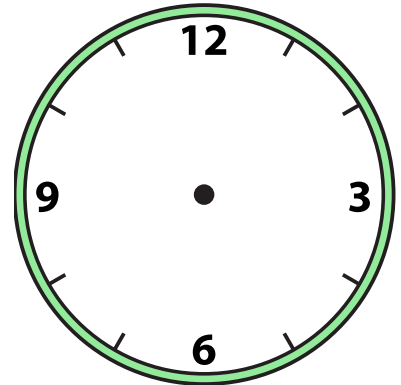
5)

3:30



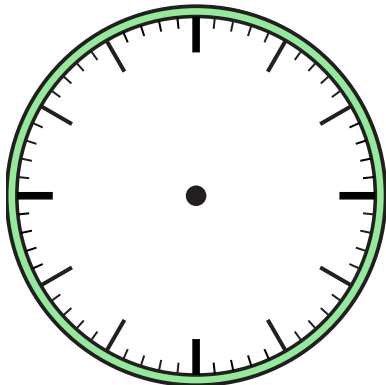
6)

11:30



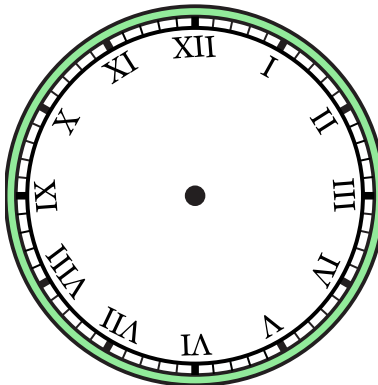
7)

6:30



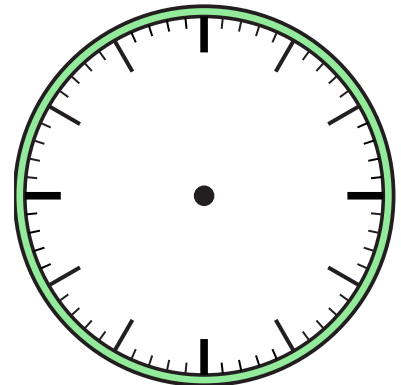
8)

10:00



9)

5:00

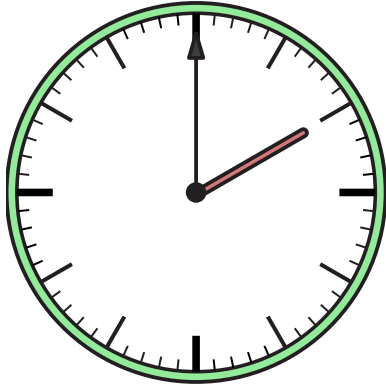




Draw the hour and minute hand on the clock so it represents the time shown.

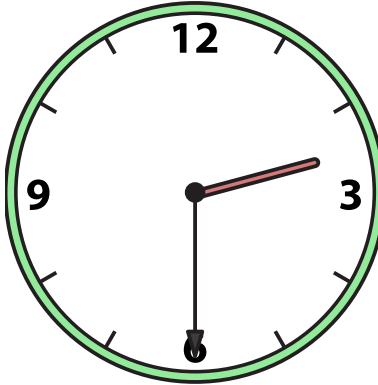
1)

2:00



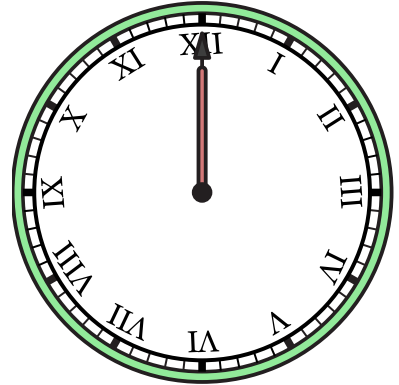
2)

2:30



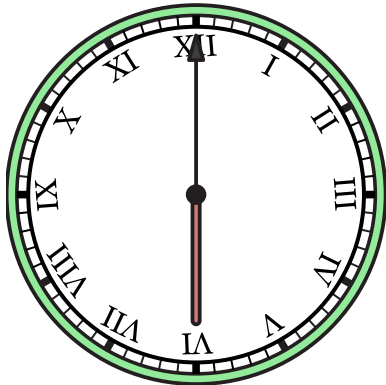
3)

12:00



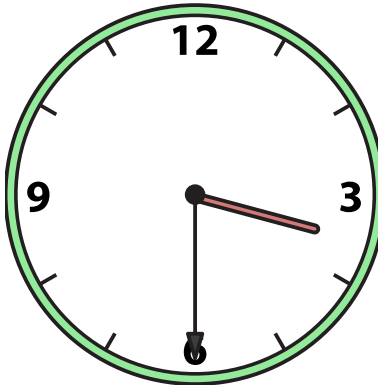
4)

6:00



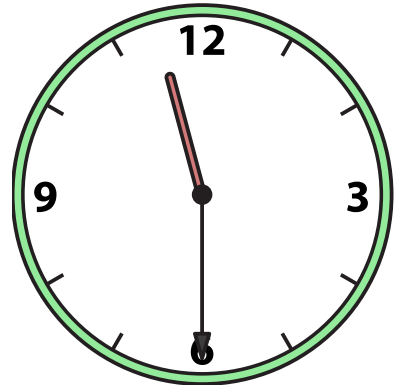
5)

3:30



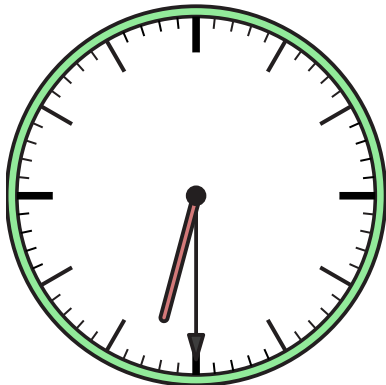
6)

11:30



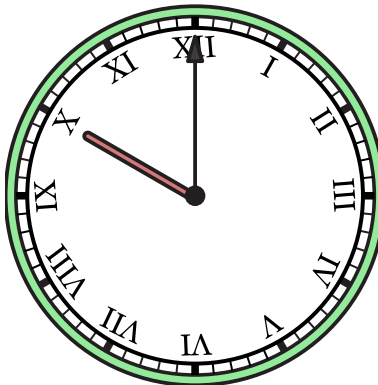
7)

6:30



8)

10:00



9)

5:00

